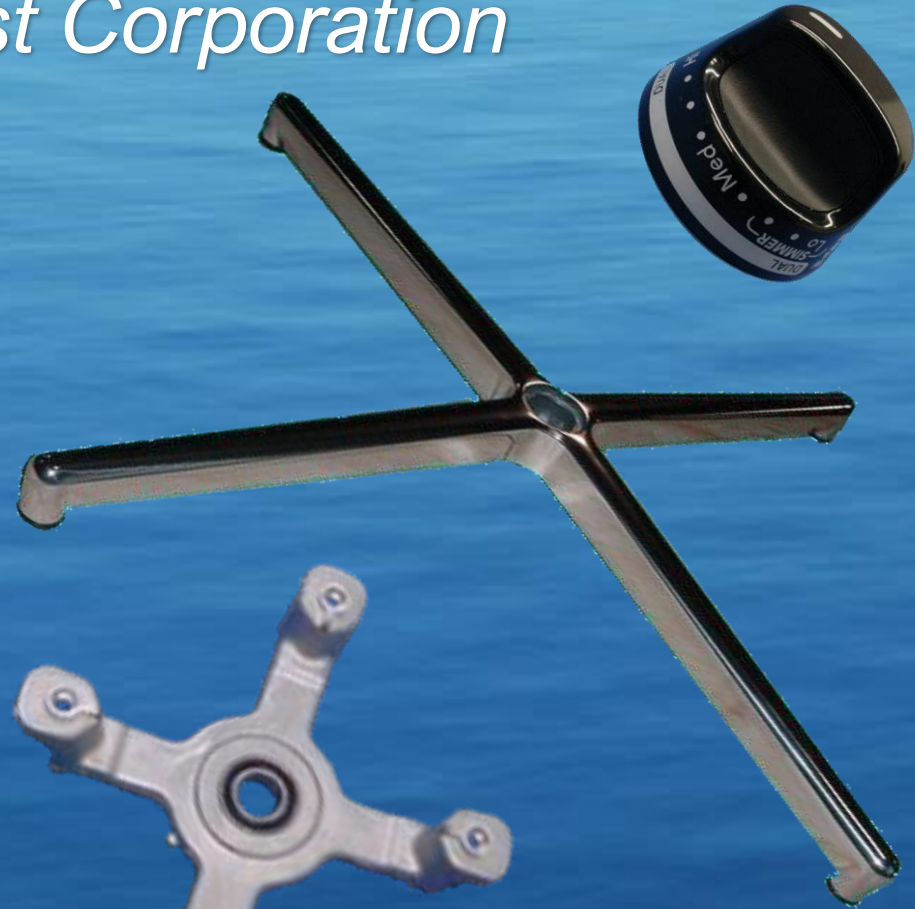
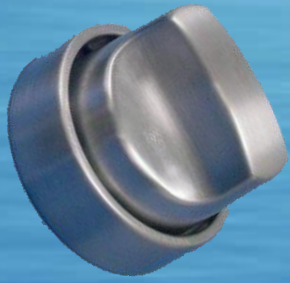




TRU Die Cast Corporation

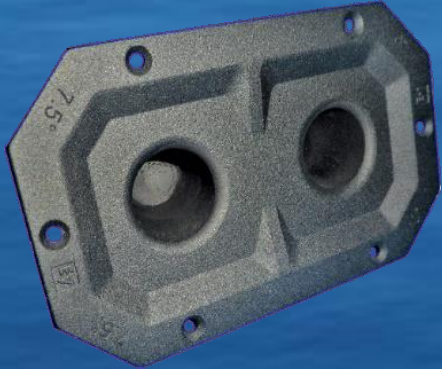
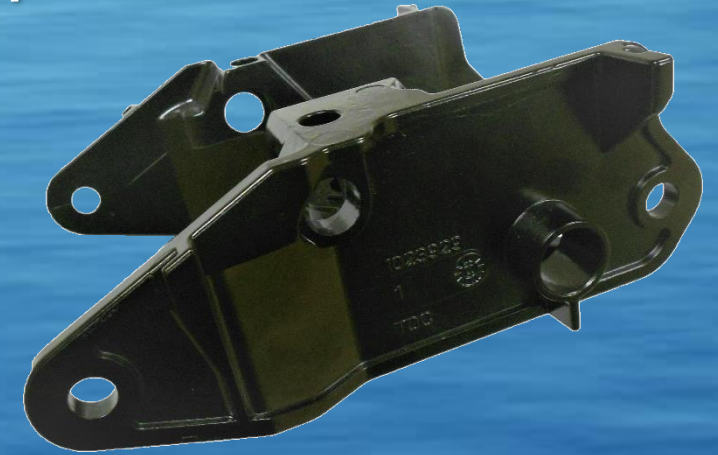


Casting our future with yours.....



TRU Die Cast Corporation

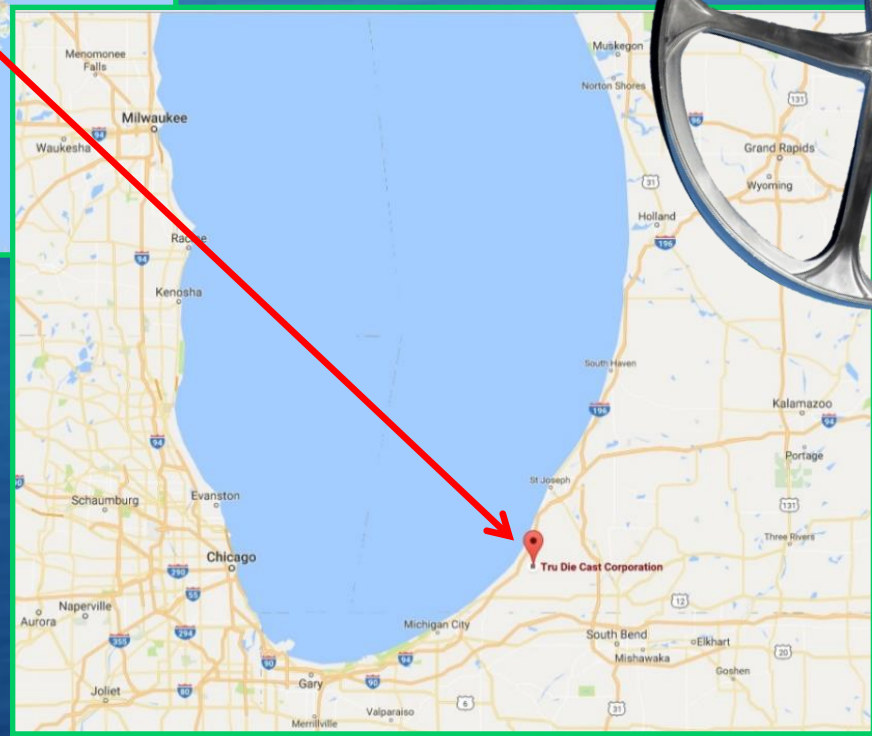
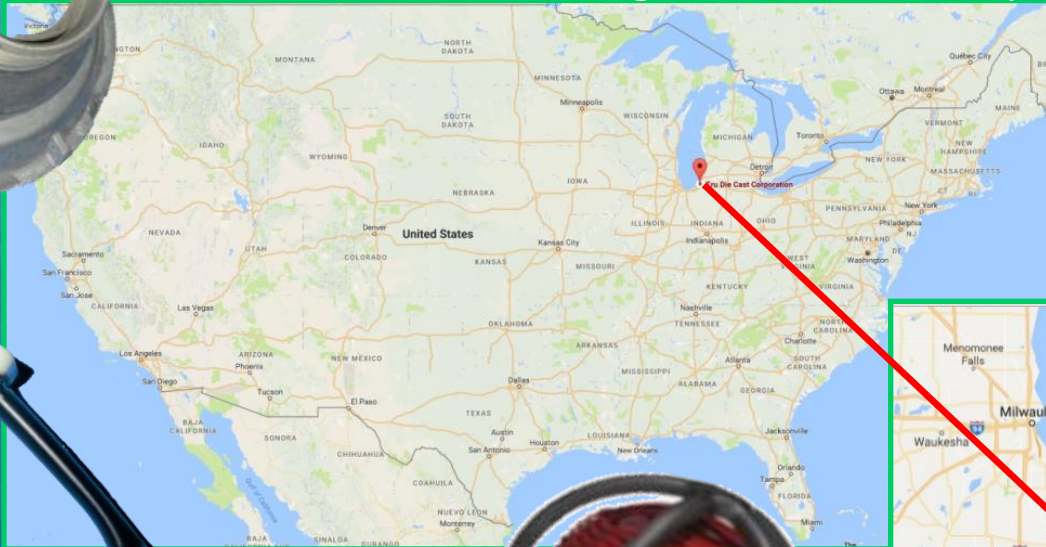
- In business since 1967.
- A 51% majority women-owned small business.
- Privately owned with no bank debt.
- 60,000 sq. feet, including 14,000 sq. feet of warehouse space.
- High pressure die casting in A380 and A413 aluminum.





TRU Die Cast Corporation

Located in Southwest Lower Michigan
between Chicago, Detroit, Indianapolis and Grand Rapids.





TRU Die Cast Corporation

QTY ALUMINUM DIE CAST MACHINES

One (1) 250-ton HPM

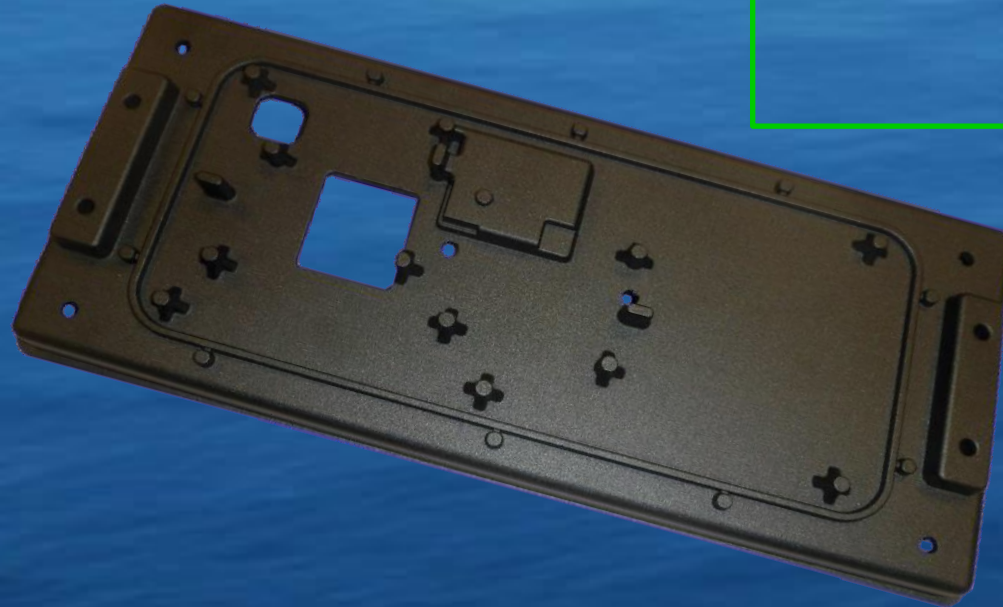
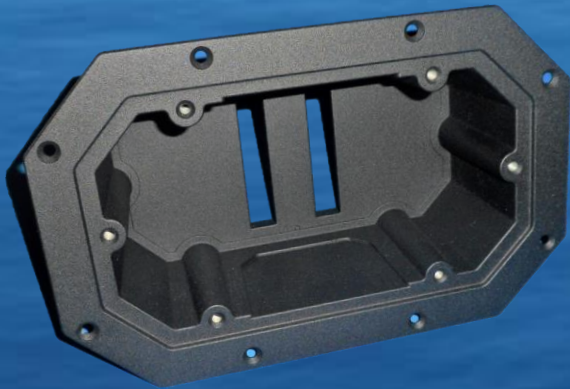
One (1) 650-ton B&T

One (1) 650-ton Toshiba semi-automated work cell.

Two (2) 800-ton Toshiba semi-automated work cell.

One (1) 800 B&T

One (1) 900-ton UBE

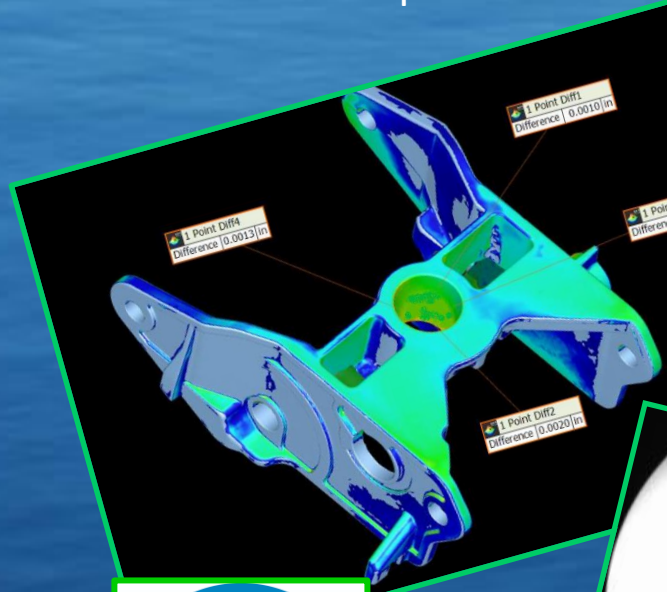




TRU Die Cast Corporation

Quality department

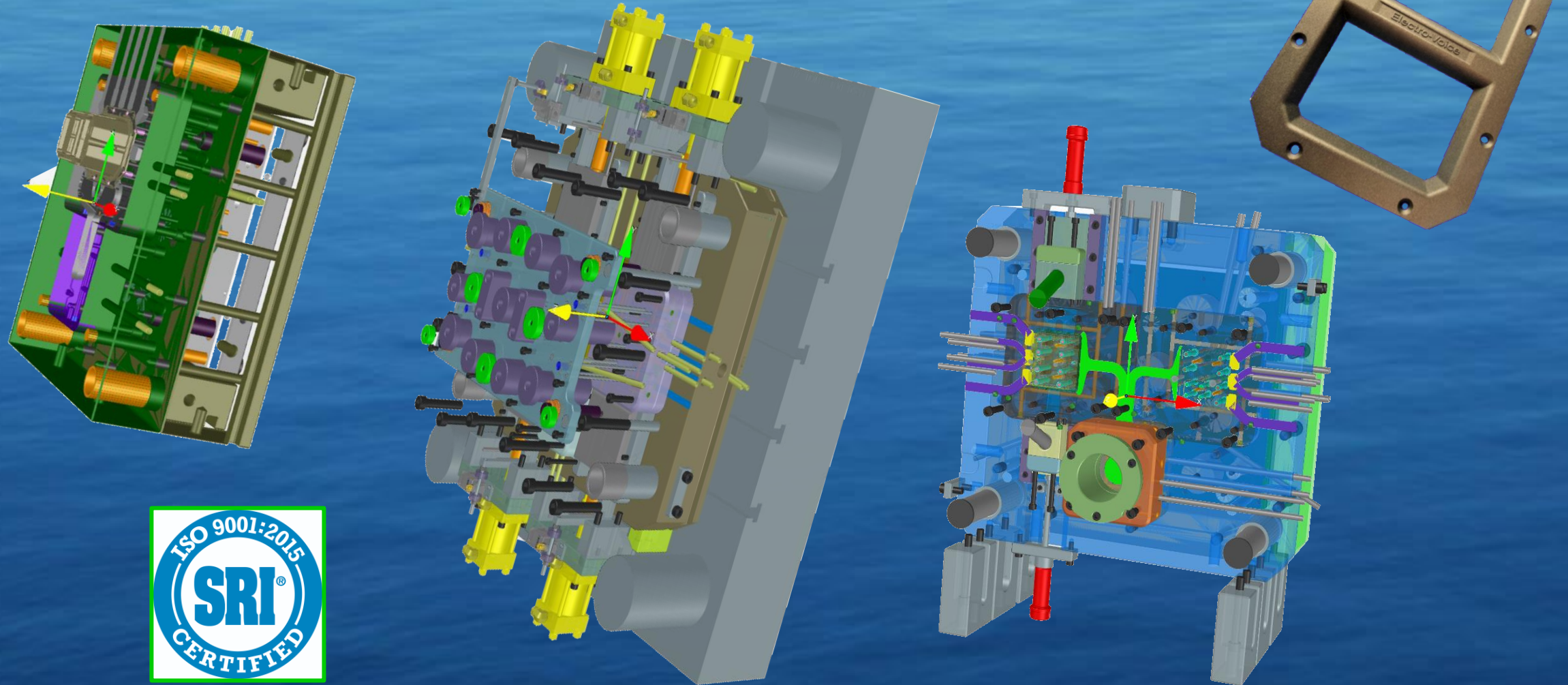
- 1 Mitutoyo CMM
- 1 Comet XRP (Lake X-ray LKX120U) – 120KU Industrial X-Ray unit
- 1 Metal spectrometer





TRU Die Cast Corporation

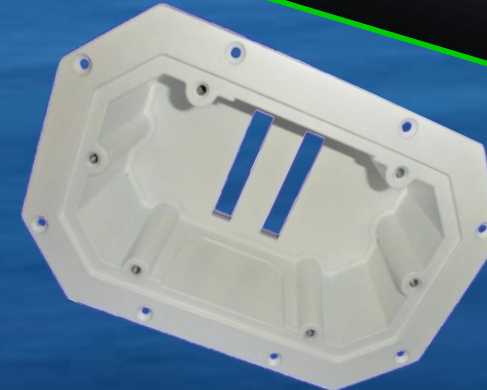
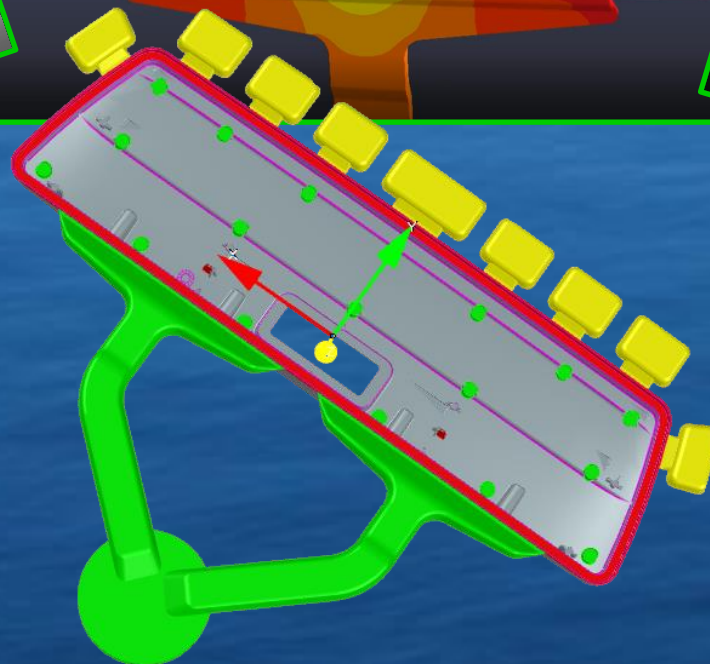
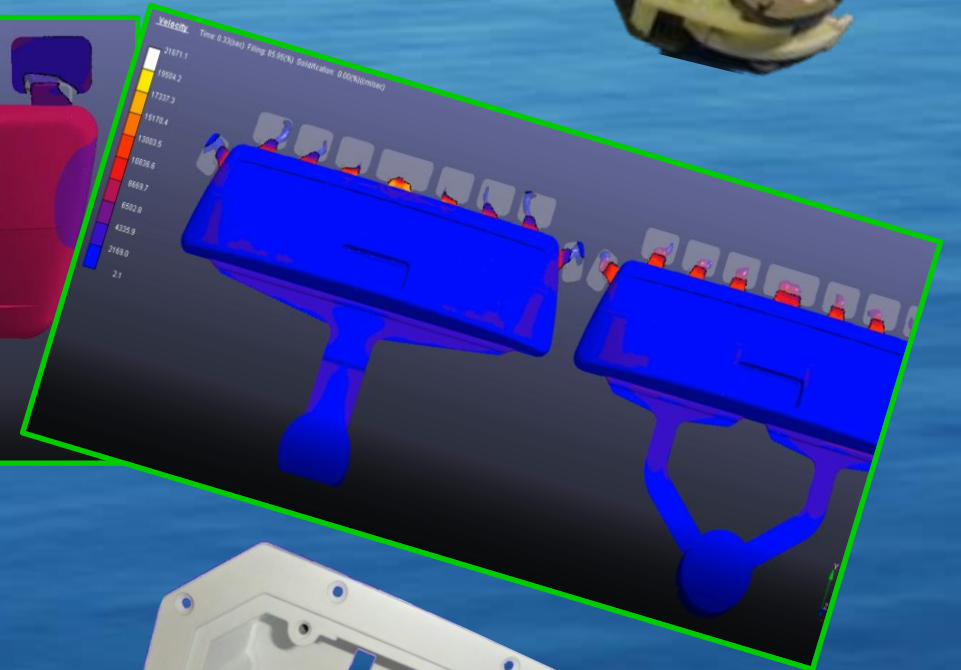
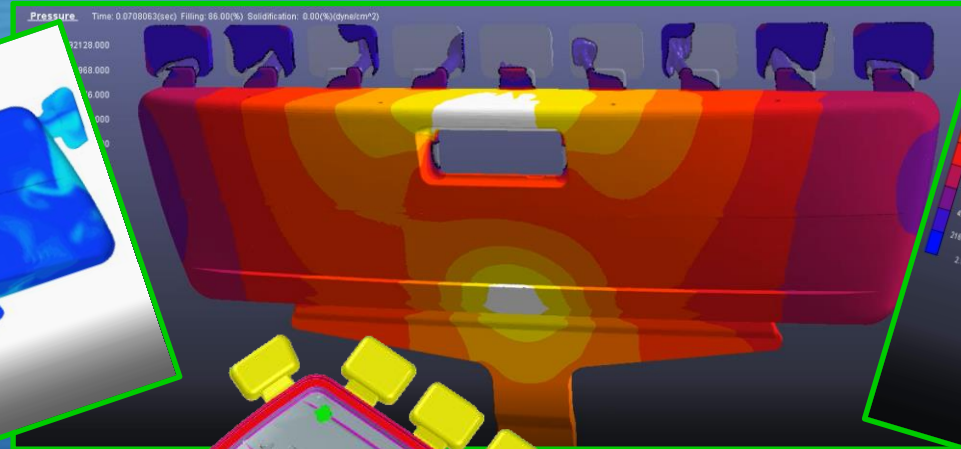
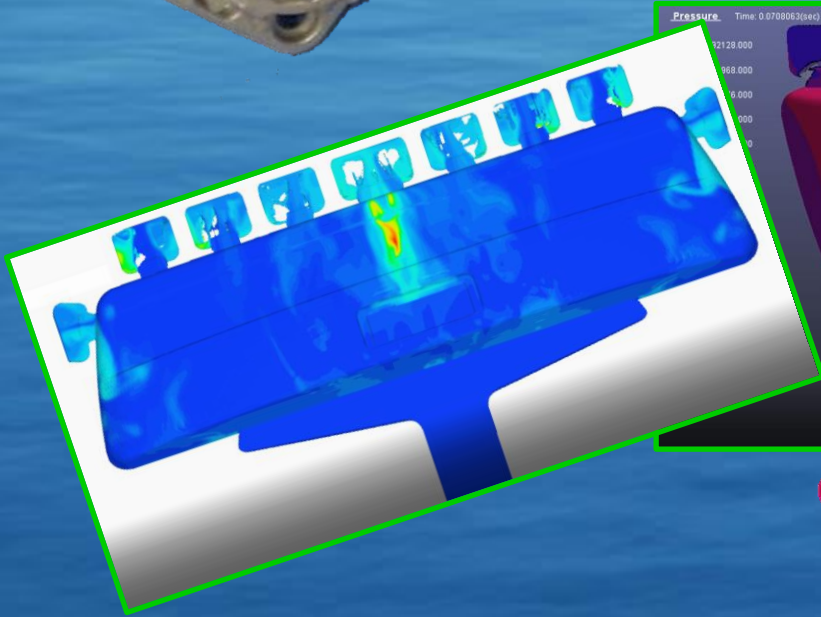
Alliances with state-of-the-art tool shops – 3D capable, multi axis CNC equipped.





TRU Die Cast Corporation

We offer mold flow through our partner tool shops prior to new tool builds.





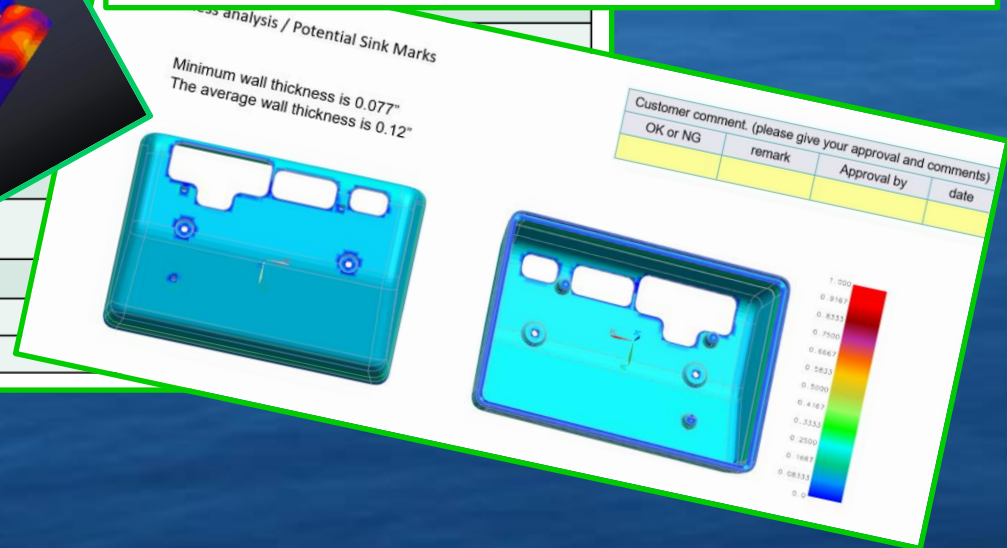
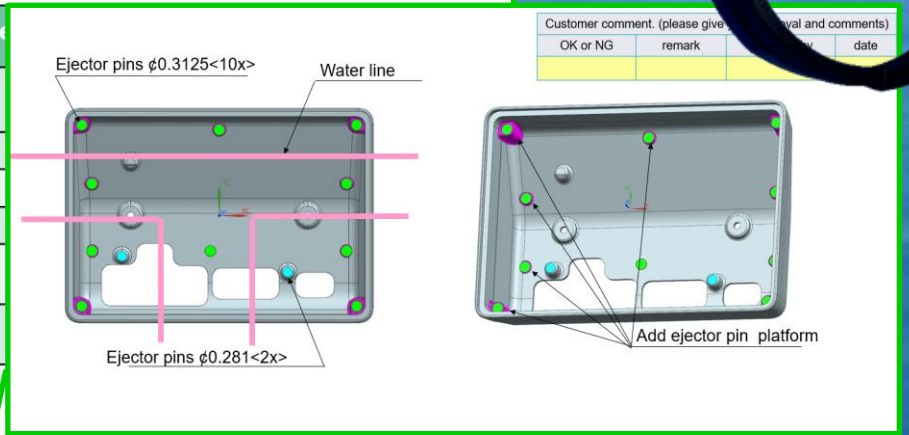
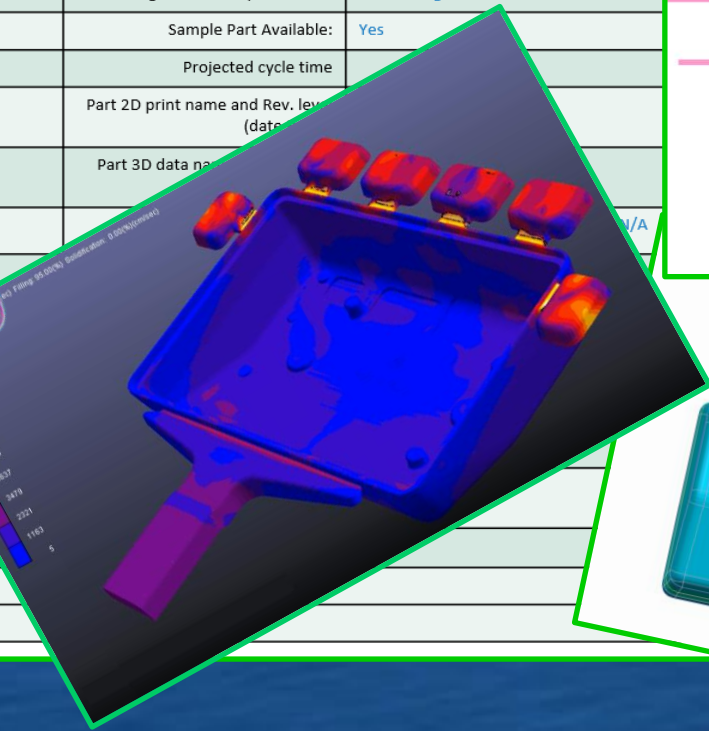
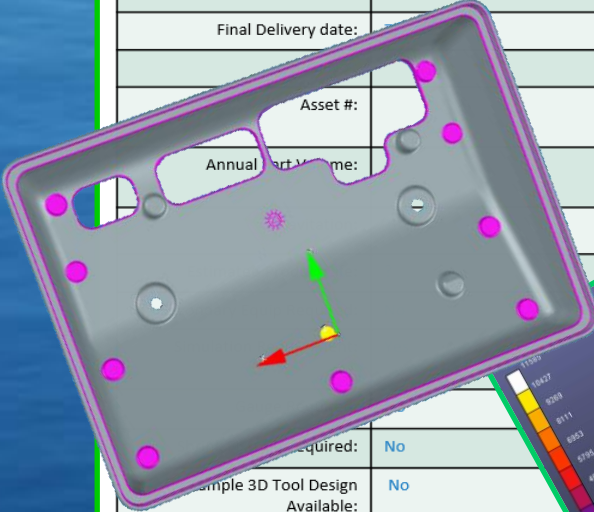
TRU Die Cast Corporation

Complete design for manufacturing review and approval prior to building any new tool.



General Project Information

Start date: 02/12/2023		Names of attendees at DFM initial meeting	
Customer	Tru Die Cast	Customer contact:	
PO Received Date:	02/12/23	Design standard specification	Per Tooling Standards
Final Delivery date:		Sample Part Available:	Yes
Asset #:		Projected cycle time	
Annual Part Volume:		Part 2D print name and Rev. level (date)	
Sample 3D Tool Design Available:	No	Part 3D data name	
Customer			



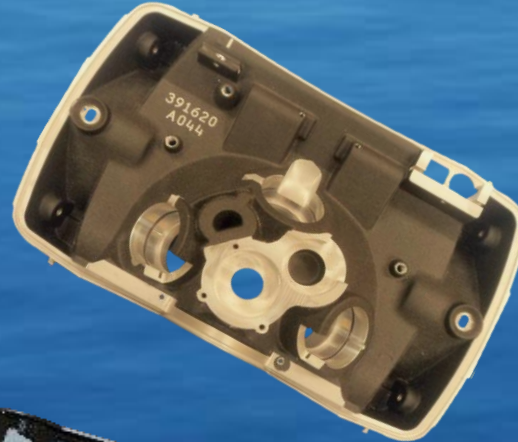


TRU Die Cast Corporation

Subcontracted Sources

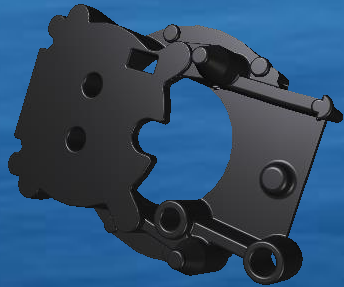
CNC machining, E-coating, Powder coating, Plating, PVD,

Vibratory deburr, Shot blasting, Buffing, part sealing impregnation.





TRU Die Cast Corporation



CERTIFICATE OF REGISTRATION



Having been audited in accordance with requirements of

ISO 9001:2015 – ASQ/ANSI/ISO 9001:2015

SRI Quality System Registrar, 300 Northpointe Circle, Seven Fields, Pennsylvania, 16046, USA, hereby grants to:

Tru Die Cast Corporation

Registration of the management system at its location:

**13066 California Road
New Troy, Michigan, 49119, USA**

The conditions for maintaining this certificate of registration are set forth in the SRI registration agreements R20.3 and R20.4. Further clarifications regarding the scope of this certificate and the applicability of ISO 9001:2015 requirements may be obtained by consulting the organization.

Scope of ISO 9001:2015 registration: "Manufacture, machining, assembly and supply of small to medium size aluminum and zinc die castings."

Initial SRI Registration date: November 3, 1999

Current registration period: January 6, 2022 through January 5, 2025

Signed for SRI:

Christopher H. Lake, President & COO

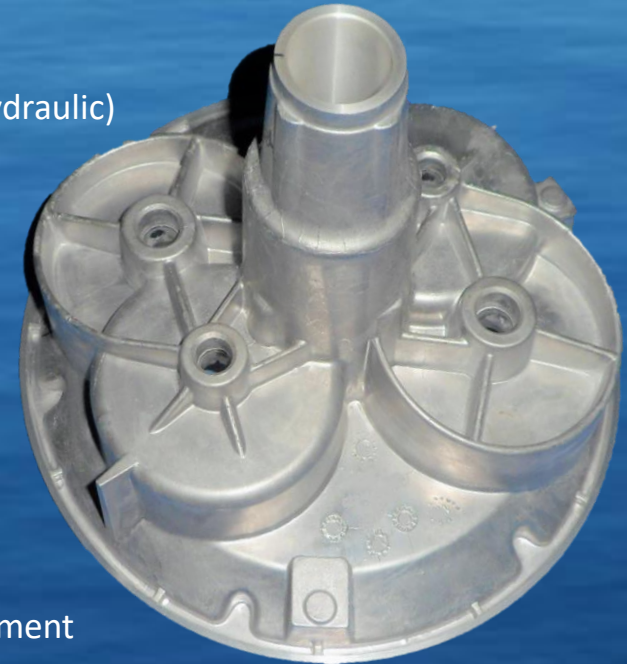
Release Date: January 6, 2022
Certificate Number: 022097
Registration Number: 1349-01





TRU Die Cast Corporation

We are proud to serve the following industries :



Air Compressor components

Agriculture

Appliances

Automotive

Communications

Construction

Electronics

Fan Blower Systems

Food Preparation

Fluid Handling Systems

Furniture

Heavy-Duty Transportation

HVAC

Industrial Equipment

Laboratory equipment

Lighting Systems

Livestock components

Marine

Military

Motors (electronic and hydraulic)

Office Furniture

Off-Road Equipment

Oil and Natural Gas

Power Tools

Professional Audio

Pumps and Valves

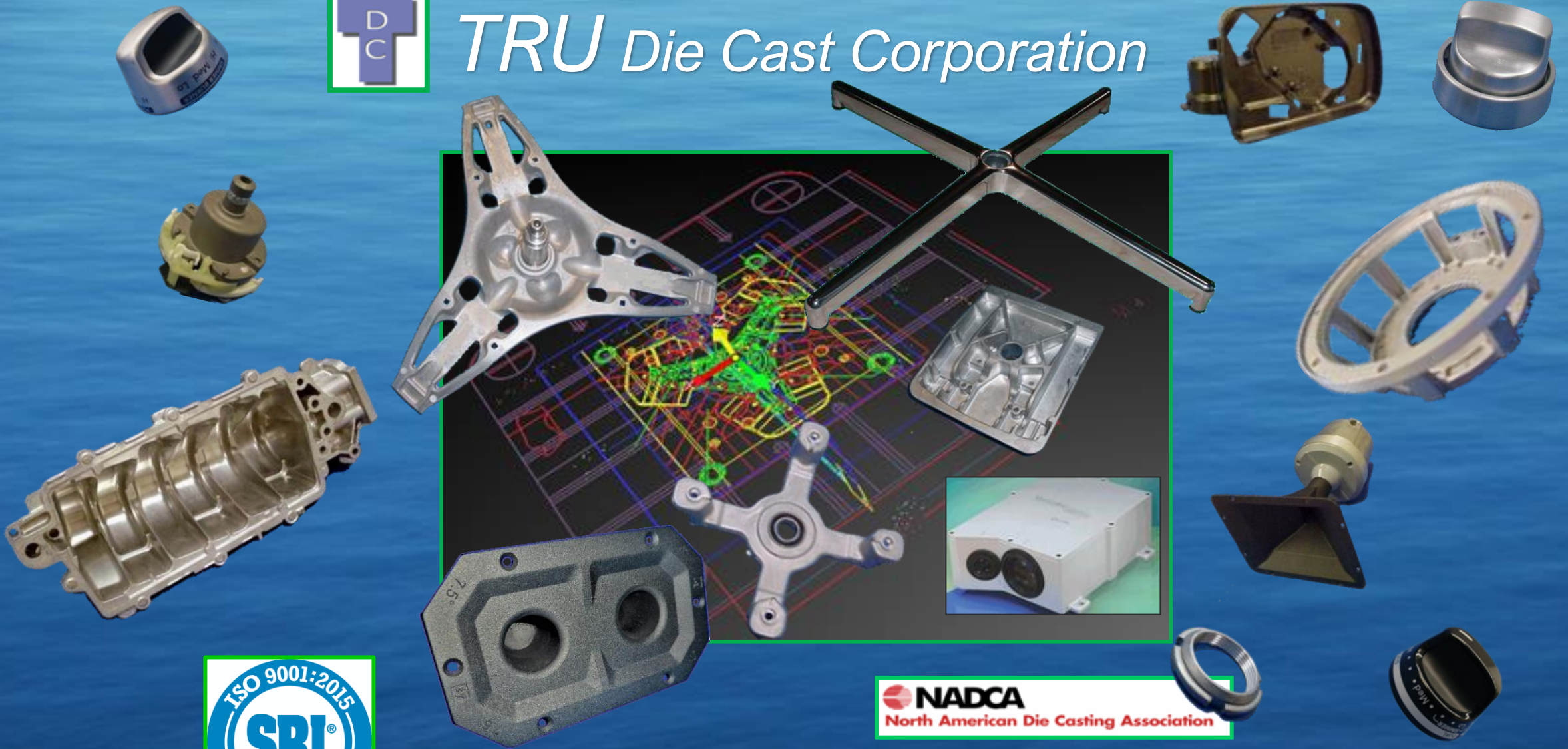
Recreational Vehicles

Safety and Security Equipment





TRU Die Cast Corporation



We are proud to support our customers in their quest for high quality competitive die cast components which meet their needs.



TRU Die Cast Corporation



Casting our future with yours.....



Phone: (269) 426 – 3361
Fax: (269) 426 – 3219
13066 California Road
New Troy, Michigan 49119
e-mail: contact@trudiecast.com